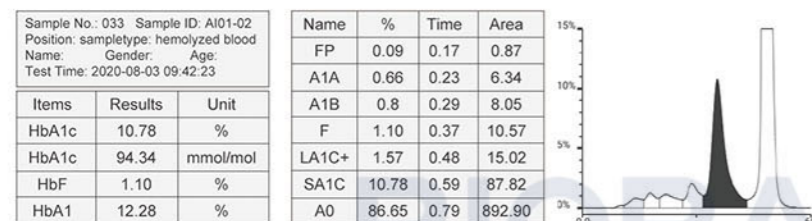


# Automated Glycohemoglobin Analyzer

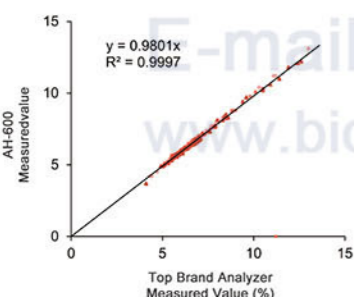
## AH-600

### Features:

- ①. Fast  
First test takes 2 minutes  
1 Min/Test (60 tests/Hour)  
Rotated sample rack loader
- ②. Precise  
Ion exchange chromatography / Three elution buffers  
Report in both NGSP and IFCC results



### ③. Stable



### Repeatability

Intra-batch assays (n=10)

|      | Low   | High  |
|------|-------|-------|
| Mean | 5.1%  | 10.1% |
| SD   | 0.05  | 0.05  |
| CV   | 0.94% | 0.51% |

Inter-batch assays (n=20)

|      | Low   | High  |
|------|-------|-------|
| Mean | 5.1%  | 10.2% |
| SD   | 0.04  | 0.06  |
| CV   | 0.87% | 0.56% |

### ④. Easy

- One key operation, smart settings
- Automatically sampling, hemolyzing and mixing
- Applying in whole blood and diluted blood
- Mixing loading for primary tubes and micro-cup
- RFID scanner, management for reagent lot No., expiry date, and residue check
- LIS bi-directional transmission with reports in both diagram and text

### Hemoglobin A1c:

#### Diagnostic Criteria of Type 2 Diabetes

| Standards of Diagnosis  | Plasma Glucose & HbA1c |
|---|------------------------|
| Classic symptoms of high blood sugar+ HbA1c   | ≥6.5 %                 |
| or + FPG (Fasting Plasma Glucose)   | ≥126 mg/dl             |
| or + OGTT (Oral Glucose Tolerance Test)   | ≥200 mg/dl             |
| If without classic symptoms, each test usually needs to be repeated on a second day to diagnose diabetes. |                        |

Testing should be carried out in a health care setting (such as clinics or hospital lab)

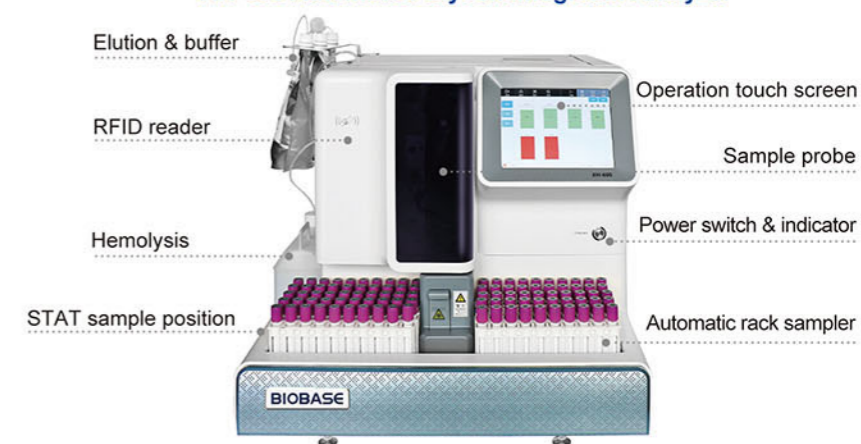
### Clinical Usage of HbA1c

- ①. Early screening and diagnosis of diabetes
- ②. Effect evaluation of glycaemic control for treatment adjustment
- ③. Differential diagnosis between stress hyperglycemia and diabetes
- ④. Prevention, monitoring and evaluation for complications of diabetes

### Regular HbA1c Measurement:

- ①. Once per 6 months for the diabetics with glycemia well controlled;
- ②. Once per 3 months for the diabetics with failed glycemia controlled or treatment adjustment needed.

### AH-600 Automated Glycohemoglobin Analyzer



### Parameters:

| Model                   | AH-600  |
|-------------------------|---|
| Measurement Principle   | Ion-exchange HPLC   |
| Test Mode               | Standard mode/Variant mode  |
| Throughput              | Standard mode: 60s/test; Variant mode: 96s/test   |
| Items                   | Standard mode: FP, A1A, A1B, F, LA1C+, SA1C, A0<br>Variant mode: With additional HbS, HbC, HbD, HbE       |
| Measurement Range       | HbA1c: 3%~20%   |
| Repeatability           | CV≤1.0%   |
| Sample Type             | Whole blood and diluted blood   |
| Sample Management       | LIS loading, barcode scanning   |
| Sample Loading Capacity | 10 samples/rack*9 racks. Continuous circulating rack sampling system                                      |
| STAT                    | STAT priority   |
| HbA1c Report Form       | In both graphic and value report with IFCC(mmol/mol) and NGSP(%) results                                  |
| Consumable              | Elution buffer, hemolysis & wash solution, column, filter, calibrator, control                            |
| Reagent Management      | RFID scanning, automatically loading info of lot, expiry date and remains, etc.                           |
| Operation Interface     | English operation software, HDMI touch screen   |
| User Management         | Authorization set for different levels  |
| Data Storage            | 100,000 results. Available for statistics, online queries, data backup, data export                       |
| Export&Communication    | RS-232 (Bi-directional). Built-in thermal printer   |
| Maintenance             | Automatic maintenance in startup and off, alarm and error indication, daily maintenance reminder&guidance |
| Power Supply            | AC100~240V, 50/60Hz   |
| Product Size(W*D*H)     | 560*590*490mm   |
| Net Weight              | 45kg  |
| Packing Size(W*D*H)     | 600*1100*600mm  |
| Gross Weight            | 58kg  |

### Reagent:

| Reagent                 | Qty      | Specification                                      |
|-------------------------|----------|--|
| Eluent 1                | 1 Bottle | 800ml/Bottle, room temperature                     |
| Eluent 2                | 1 Bottle | 800ml/Bottle, room temperature                     |
| Eluent 3/4              | 1 Bottle | 800ml/Bottle, room temperature                     |
| Hemolysis&Wash Solution | 1 Bottle | 2000ml/Bottle, room temperature                    |
| Chromatography Column   | 1 Piece  | 1 Column/Kit, 4~15°C                               |
| Filter                  | 1 Piece  | 600 Tests/Change, room temperature                 |
| Calibrator              | 1 Kit    | 1 Vial*Level 1+1 Vial*Level 2; 4mL/vial, 2~8°C     |
| Quality Control         | 1 Kit    | 1 Vial*Level 1+1 Vial * Level 2; 0.5mL/vial, 2~8°C |